



Wessex  
Rivers Trust



Made possible with

Heritage  
Fund

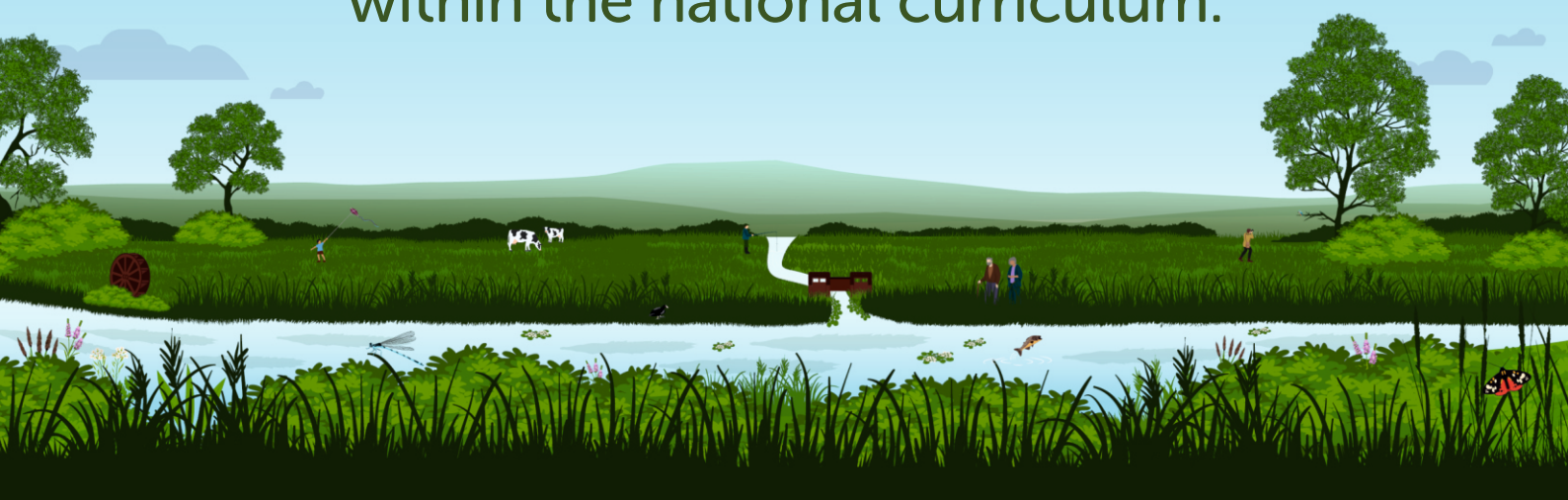


WATERCRESS &  
WINTERBOURNES



# Watercress and Winterbournes Primary School Education Information Pack

FREE education sessions about the wildlife and heritage of our chalk streams. Sessions are suitable for Key Stage 1 and 2 classes and fit within the national curriculum.



## Why choose us?

### Fun and interactive sessions...

All our sessions offer hands on, immersive activities that engage children with the natural world. Whilst we offer set sessions, we can adjust activities to fit with the school's needs.

### Our sessions are FREE

Watercress and Winterbournes is a Landscape Partnership Scheme protecting, enhancing and celebrating the seven chalk streams that make up the headwaters of the Rivers Test and Itchen.

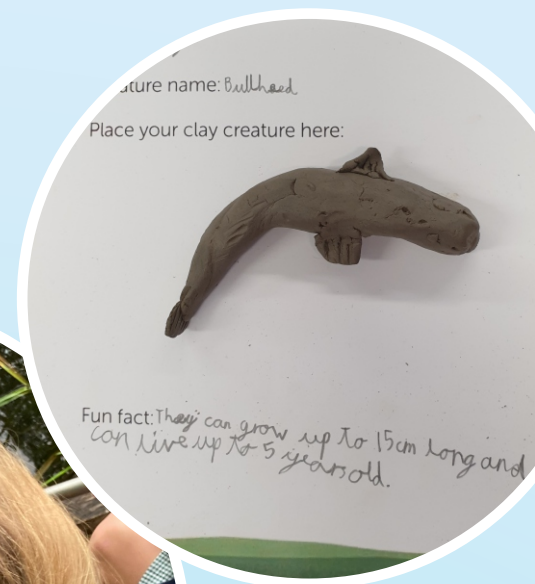
The scheme is supported by the National Lottery Heritage Fund, allowing us to offer sessions for free, and brings together 16 partners, including Wessex Rivers Trust who host the education programme.

More information about the scheme can be found here:

<https://www.hiwwt.org.uk/winterbournes>

### We offer curriculum linked sessions covering topics such as:

- Working scientifically
- Living things and their habitats
- Animals, including humans
- Evolution and inheritance
- Geographic skills and field work
- Place knowledge
- Human and physical geography
- Rivers!



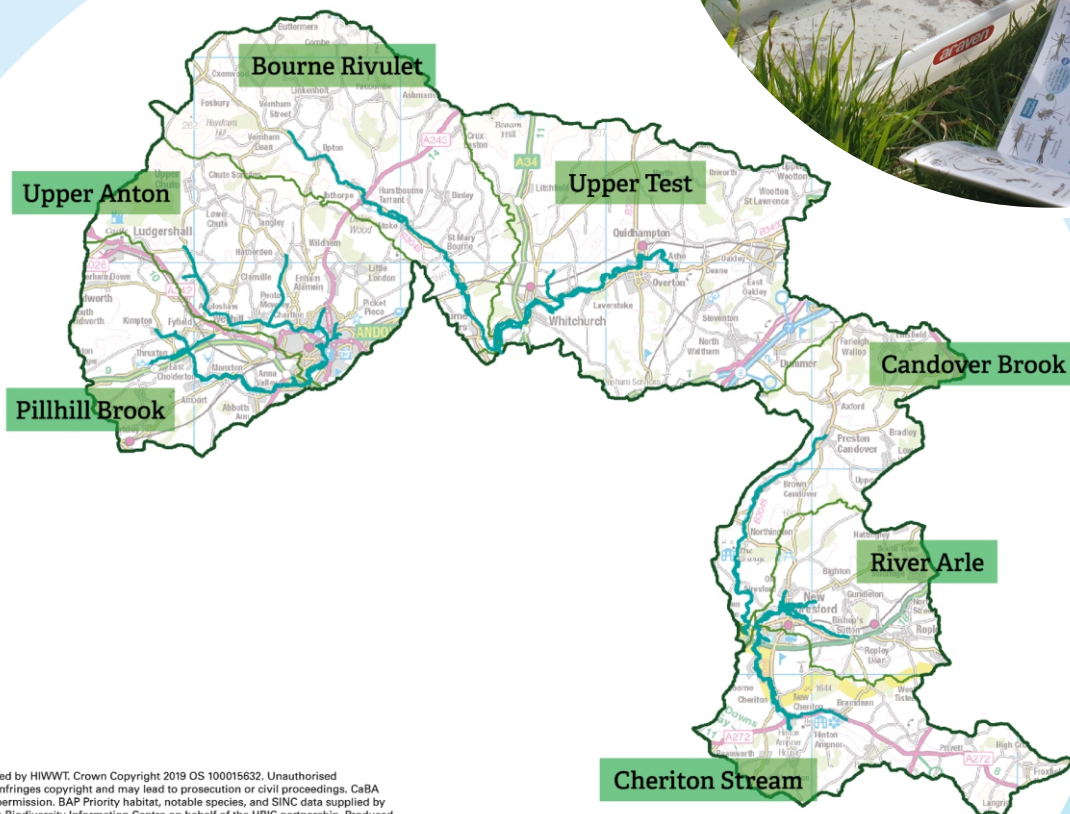
## We come to you...

We come to a site local to you, to make the learning relevant to the children and to reduce travel costs.

If we cannot find a suitable riverbank site for your session and you do not have easy access to transport, we can cover the cost of either a coach or minibus(es) to and from the river, by prior agreement. Alternatively, we can bring the river to life in your classroom.

Education sessions are available to schools and groups in and around Andover, Whitchurch and New Alresford, illustrated on the scheme area map below.

If your school is outside of the scheme area but on either the Test or the Itchen Rivers and you are interested in a session, please contact us to discuss how we can help with your learning.



## Education Session Options

There are a number of education sessions for schools to choose from. The sessions complement each other and can be delivered as a package, for maximum impact, or they can stand alone.

Programme	Length	Why choose this session?	Years	When
Interactive Assembly	45 mins	<ul style="list-style-type: none"> <li>• Educates large numbers of pupils</li> <li>• Covers river features, wildlife and heritage sites</li> <li>• Provides a great introduction before other sessions</li> </ul>	KS1 & KS2	All year
Classroom Introductory Session	2 hours	<ul style="list-style-type: none"> <li>• Covers how to stay safe around water</li> <li>• Includes an introduction to river invertebrates</li> <li>• Highlights the challenges rivers face and how we can help them</li> </ul>	KS1 & KS2	All year
Riverbank Session	2 hours	<ul style="list-style-type: none"> <li>• Fun, interactive and engaging</li> <li>• Sense of ownership of local river</li> <li>• Includes a closer look at chalk and river dipping for invertebrates</li> <li>• Can incorporate geography fieldwork</li> <li>• The best way to learn about rivers!</li> </ul>	KS1 & KS2	All year
Riverbank Follow Up Classroom Session	2 hours	<ul style="list-style-type: none"> <li>• Takes a closer look at invertebrates and their adaptations using a digital microscope</li> <li>• Pupils can research their favourite then draw or sculpt it out of clay</li> </ul>	KS1 & KS2	All year
Site Visit to a Mill, Water Meadows or Watercress Farm*	2 hours	<ul style="list-style-type: none"> <li>• Site tour by a local expert</li> <li>• Can focus on local heritage and / or current industry</li> </ul> <p>*Please note, this session may incur a charge depending on the site visited</p>	KS1 & KS2	All year
Site Visit Follow Up	2 hours	<ul style="list-style-type: none"> <li>• Design and create a model of a heritage site</li> </ul>	KS1 & KS2	All year



## What do other people think?

'Tracy and the team were brilliant from start to finish. Excellent communication, well targeted teaching, fun and engaging activities - what more could you ask?! Thank you so much for accommodating a classroom session at such short notice given the turn in the weather. Fantastic.' Teacher, Rookwood School

'The session fitted with our Y3 geography objectives perfectly and linked nicely to our current science learning. The children gained a lot from the session and were able to talk in detail about what they had learnt after the session.' Year 3 Teacher, Portway Junior School

'The day was fabulous! The children were engaged throughout and learnt so much. We will definitely repeat this activity in future years.' Year 3/4 Teacher, Cheriton Primary School

'Both classes had lovely days. You put in so much effort and your passion and knowledge was inspirational. Thank you so much for taking the time and putting in so much energy for making the experience personal to St Mary Bourne.' Teacher, St Mary Bourne Primary School

Dear Tracy and Howard

Thank you so much for our AMAZING river day. I never knew that chalk was made out of tiny skeletons and chalk acts like a sponge and how the river is so clear. I would have never known. But the thing I loved the most was the creature identifying. Thank you again.

From Jacob



Dear Tracy and Howard,

Thank you for telling us more about Cheriton stream and rivers in general. It was amazing! My favorite part was the river dipping, it's amazing how many creatures you can find. I didn't know chalk was made of tiny little skeletons.

Thank you again,

William

Dear Tracy and Howard,

Thank you so much for that cold but wonderful river experience! I loved every second of it (even if it felt like my toes were about to fall off!) my favorite part was when we were in the hall and sorting everything into middle, upper and lower course. I also didn't know this was originally an ocean (or sea) it feels weird writing that!

from  
Clemmie  
KXF

Dear Tracy and Howard

thank you for coming and teaching us. I loved exploring the creatures out and putting them in their place. I also enjoyed making the creatures out of clay. I didn't know that chalk was made out of bones of little creatures and it acted like a sponge. See you soon  
Stom Mei.

## Making a Booking

### Completing the booking form

The Watercress and Winterbournes Education Officer will work with the school to arrange the most appropriate range of sessions to suit the school's needs. To start the booking process, please complete the booking form with as much information as possible and send it to Tracy Standish via [tracy@wessexrt.org.uk](mailto:tracy@wessexrt.org.uk).

Once the booking form has been received, a confirmation email will be sent to you.

If access to a river is required, and you do not have local contacts, we can investigate possible sites for you.

### Travelling to site

We try and educate children as close to their school as possible, ideally within walking distance. If, however, schools require transport and cannot afford this, we can cover the cost of either a coach or minibus(es) to and from the river, with prior agreement.

Once a date for the visit has been agreed, the process for claiming transport costs is as follows:

- The school obtains a quote or quotes for the visit
- The school contacts Wessex Rivers Trust via email to inform us of the transport cost
- Wessex Rivers Trust agrees that cost via return email and raises a Purchase Order for payment
- The school books and pays for the transport themselves, invoicing Wessex Rivers Trust for the payment after the visit takes place with proof of the hire cost (invoice from the hire company)

Schools may claim once per year whilst funds last and grants will be allocated to eligible schools (within the project area) on a first come, first served basis. For further details please ask on booking.

Alternatively, we can bring the Riverbank Session to your classroom.

### Pre-Visit

If we're delivering a session onsite, we recommend the lead teacher has a "pre-visit" meeting at the location with the Watercress and Winterbournes Education Officer, to discuss the proposed content and timings of the visit, run through any relevant risk assessments and ensure school staff are familiar with the site before the day.



## Payment & Cancellations

With the exception of a site visit to a mill, water meadows or watercress farm, all sessions are FREE. The cost for such site visits will be incurred by the school, will vary depending on the venue and are subject to change.

Prices will be agreed on booking, current costs are as follows:

- Whitchurch Silk Mill - £100 per class
- Water meadows - Vary depending on location
- Watercress farm - Vary depending on location

Cancellations should be made no less than one week before the booked date. If the session is cancelled less than one week before the booking any charge may still apply, please check directly with the venue.

Sessions will go ahead in light rain and cold conditions. If the weather forecast does not look safe for the booking date, the session will be cancelled, at least one day before and either rearranged for another time or brought into the classroom where possible.

## Ratios

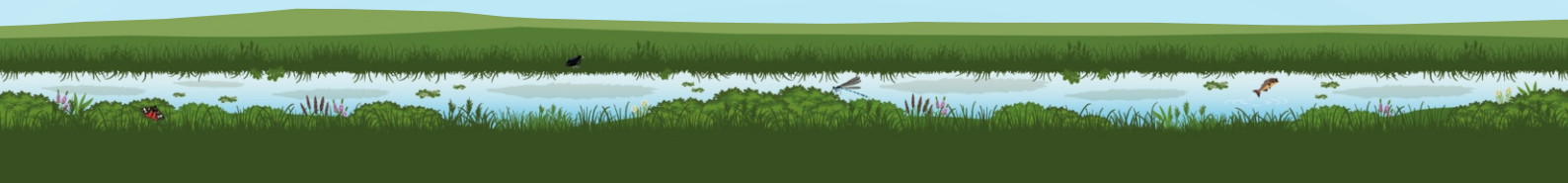
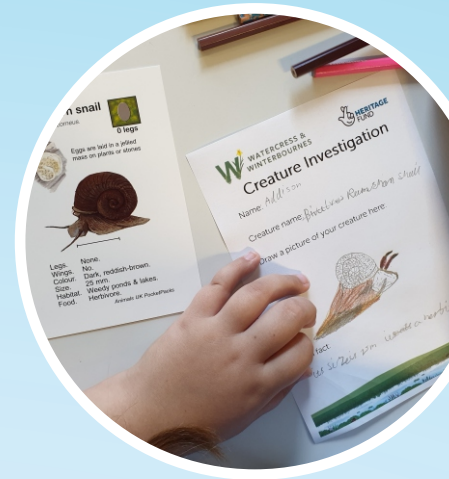
Although Wessex Rivers Trust staff will lead the session they are unable to be responsible for the supervision of the children. We recommend at least 1:6 (KS1) and 1:8 (KS2) adult to child ratio for outdoor sessions, not including Wessex Rivers Trust staff and volunteers.

## Photo permission

Watercress and Winterbournes staff (Wessex Rivers Trust and Hampshire and Isle of Wight Wildlife Trust) like to take photos, audio and video of some of the sessions for educational and promotional purposes. These include our websites, social media platforms, news magazines and press releases.

Due to the nature of the Watercress and Winterbournes Landscape Partnership Scheme these photographs may be shared with some scheme partners and the National Lottery Heritage Fund for use in relation to the scheme. They may also be used for promotional purposes by third parties, e.g. newspaper articles about scheme activities.

The session leader will talk to the class teacher before the visit as to whether we can take photographs of some children on the day and the relevant paperwork will be completed.





## What to wear to outdoor sessions?

Children AND adults should dress for the weather on the day and for the activity. Sessions will go ahead, except in extreme weather conditions. PE kit or similar is normally a better choice of clothing than school uniform.

For warm weather we recommend wellies, water shoes, crocs or old trainers (flip flops, sliders and bare feet are not suitable for river dipping), a sunhat, sun cream and lots of water to drink. To minimise stings and scratches, long sleeved t-shirts and long trousers are recommended.

For cold/wet weather we recommend wellies, warm hat, gloves, waterproof coat, waterproof trousers and lots of layers. We also recommend children having a snack, just before, during, or straight after the session.

We recommend the group leader brings a full set of spare clothing in case of an unlikely fall in the river! We also suggest all children bring spare socks, shoes and shorts/ trousers for after the session. If they enjoy their river dip, they are likely to get wet!!





## Keeping you Safe

### Safeguarding

If a Wessex Rivers Trust staff member is concerned about the welfare of a child they will report this to the class teacher or school Designated Safeguarding Lead. Wessex Rivers Trust will record and report any concerns or disclosures in accordance with their Safeguarding Policy. It is the school's responsibility to follow this concern up where necessary. For more information on our safeguarding policy please contact us.

### Medical conditions and additional needs

When booking a session please inform us (via the booking form) of any medical conditions or additional needs within the group. This will allow us to make any adjustments to the activities and keep everyone safe.

### Health and Safety

When learning in nature we need to be aware of the risks involved. When the booking is confirmed, Wessex Rivers Trust will send their activity risk assessments to the school, for the school to use as a guide when producing their own. If you have any concerns about any of the risks highlighted, please get in touch.

## Contact Details

For any queries please contact Tracy Standish,  
Watercress and Winterbournes Education Officer,  
via [tracy@wessexrt.org.uk](mailto:tracy@wessexrt.org.uk) or 07518 928814.



Watercress and Winterbournes is a Landscape Partnership Scheme protecting, enhancing and celebrating the seven chalk streams that make up the headwaters of the Rivers Test and Itchen.

The scheme is supported by the National Lottery Heritage Fund and brings together 16 partners, including Wessex Rivers Trust who host the education programme.

More information about the scheme can be found here:  
<https://www.hiwwt.org.uk/winterbournes>

